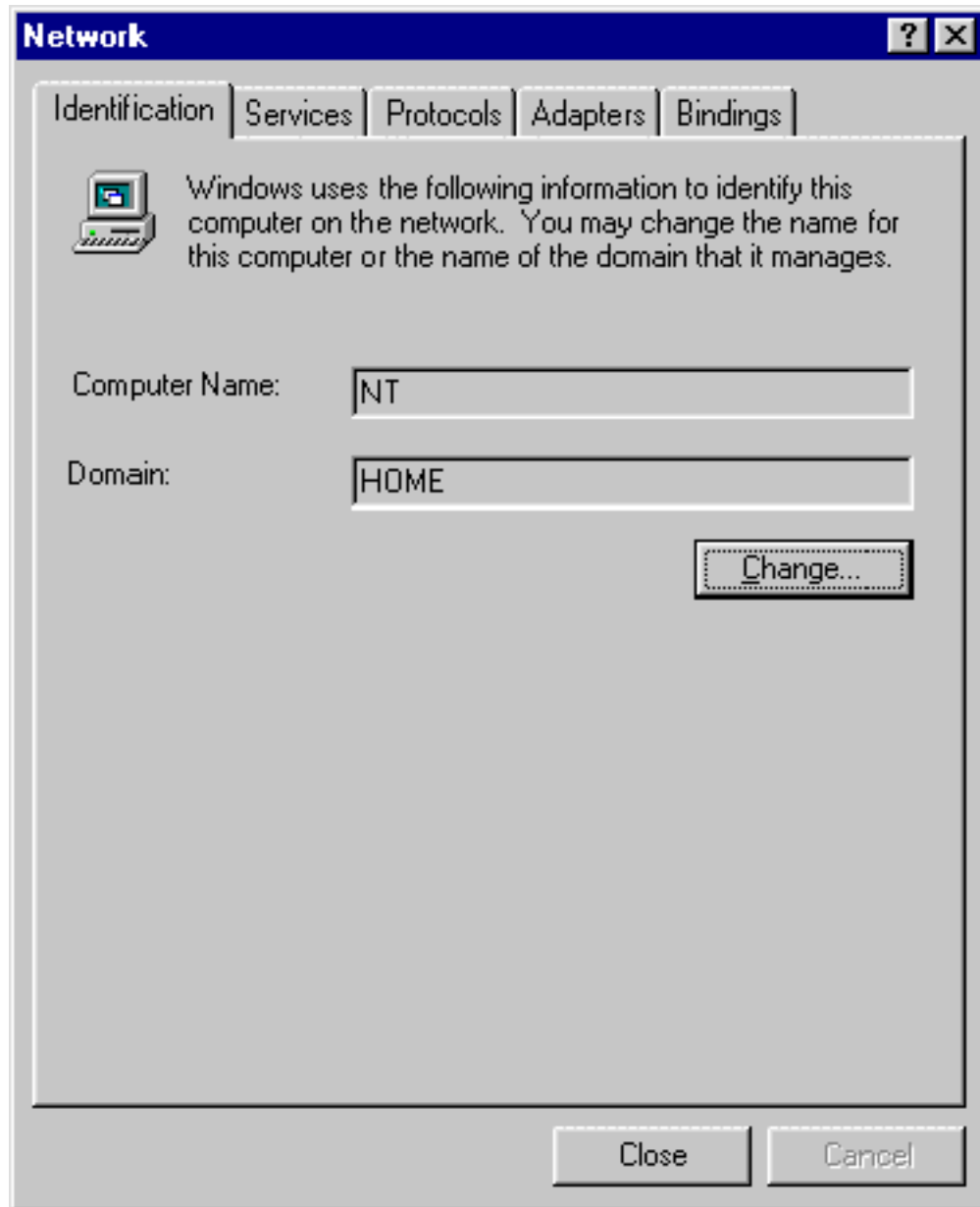


Setup of Windows NT 4.0 Workstation LAN Access

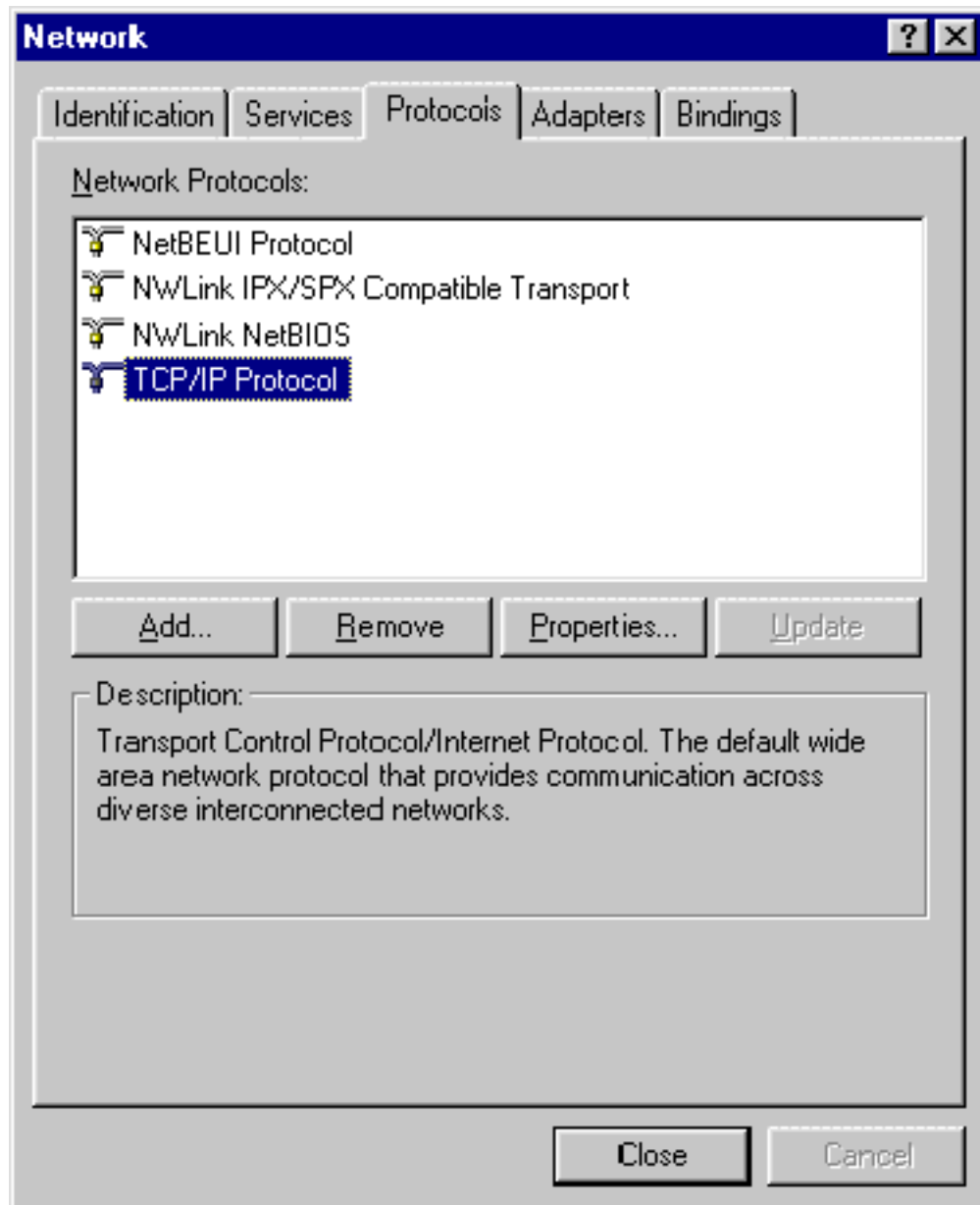
1. Open the Network control panel by double-clicking on the *My Computer* icon followed by the *Control Panel* folder and double-clicking on the *Network* icon. The "Network" dialog box appears:



The Computer Name and Domain/Workgroup are not of any importance to connecting to the Internet. These are used to identify the computer and local area network grouping if the computer is part of a network.

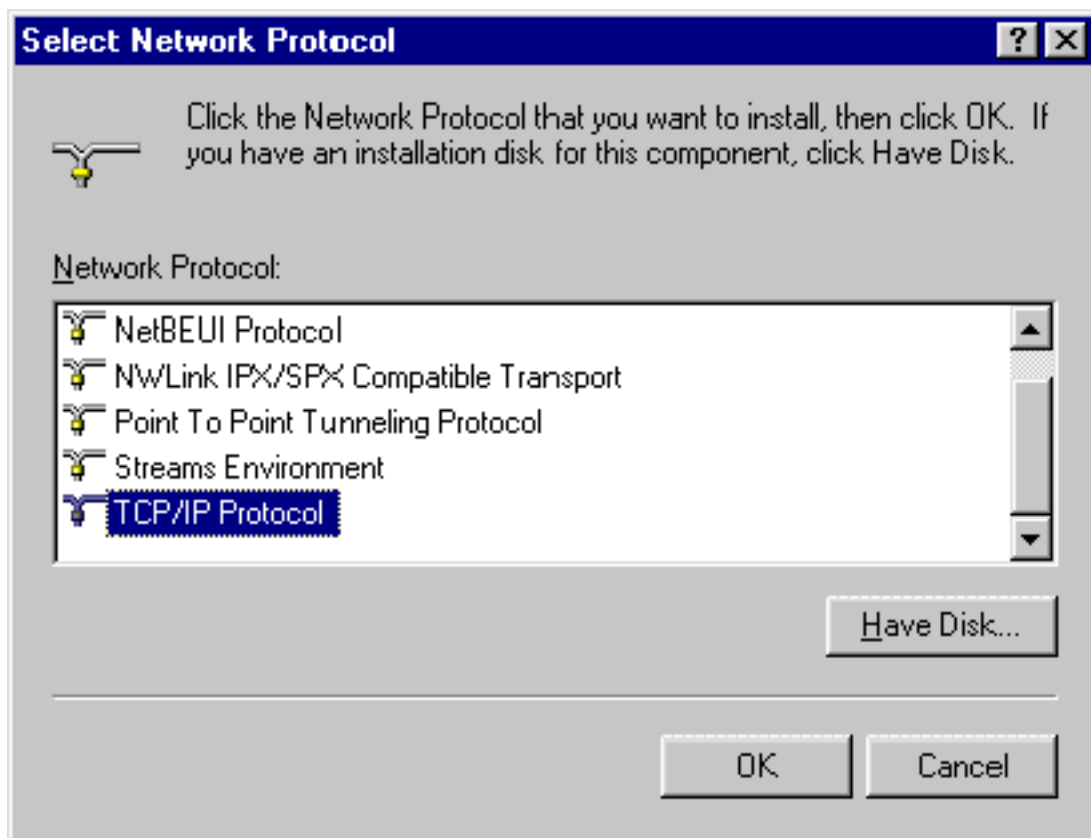
2. Click on the "Protocols" tab. This page is used to specify the protocols that the computer uses

on the network.



Your computer will likely have other protocols installed, such as NetBEUI. These protocols are not used by COGECO and can be ignored. They should not cause any issues connecting to the Internet.

3. If the TCP/IP protocol is not listed, click the **Add** button to open the "Select Network Protocol" dialog box, shown here:



The only protocol required on your computer is TCP/IP. Other protocols may be present if you are using the computer to access other networks.

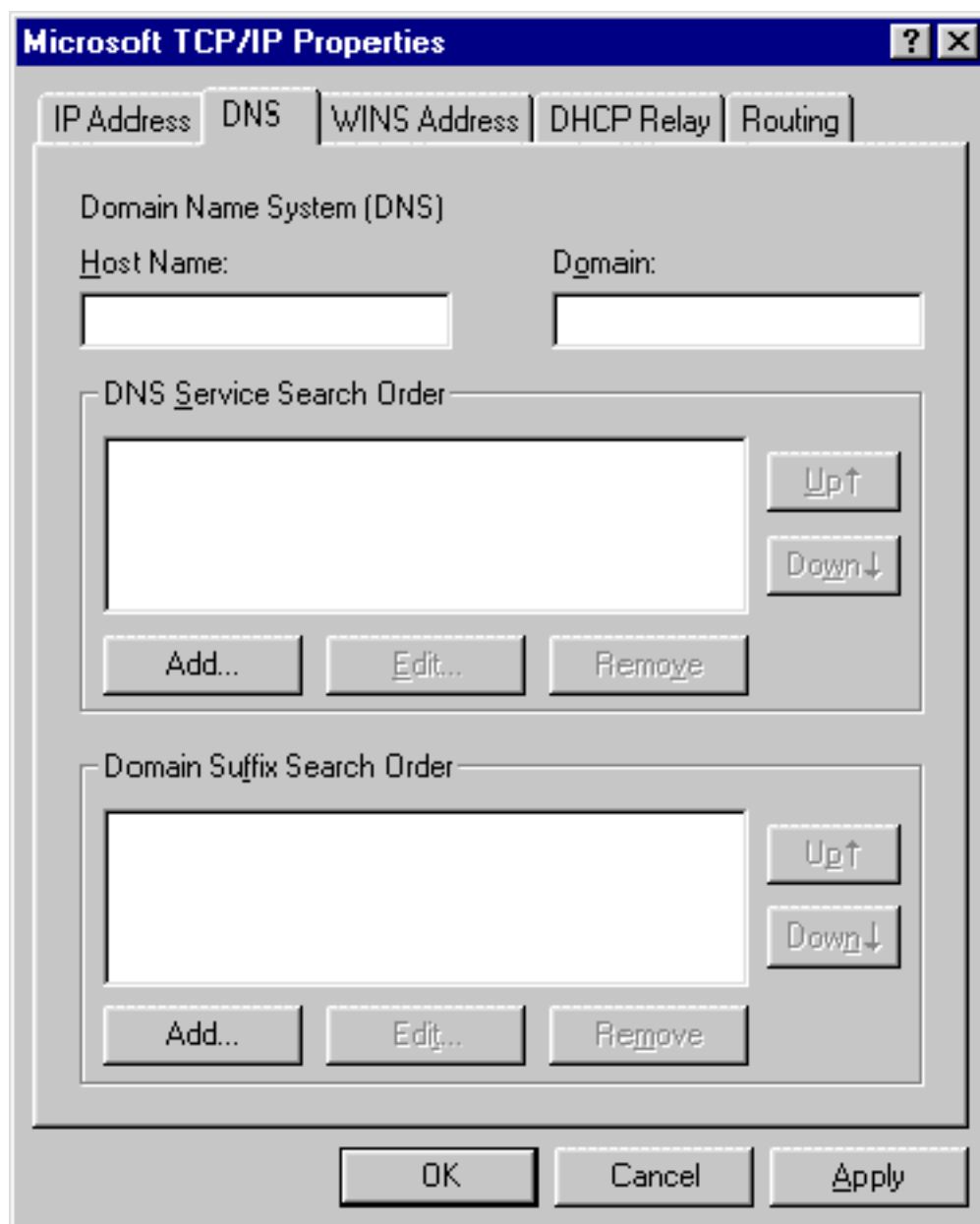
4. Select "TCP/IP Protocol" from the list and click **OK** to install the TCP/IP protocol. The "Microsoft TCP/IP Properties" dialog box appears:

5. Click the "DNS" tab.

If you use the LANcity cable modem, enter your **username** in the **Host Name field**. Enter **cgocable.ca** in the **Domain field**. Click **Add** and enter the two **DNS Service Search Order 205.151.69.200** and **205.151.68.200**

If you use the **Ericsson, Samsung** ou **COM21** cable modem, clear any settings in this page.

You don't have to set this because all informations will be assing automatic when you will connect to Internet.



6. Click **OK** to close the Network control panel. The computer will ask you to restart your computer.